

TWO STAGE COMPRESSION PERMANENT MAGNET VARIABLE SPEED NORMAL PRESSURE SERIES

- SMOOTH SPEED ADJUSTMENT
- EXCEEDS FIRST CLASS ENERGY EFFICIENCY STANDARDS
- LOW NOISE
- HIGH DISCHARGE CAPACITY
- DUAL INVERTER CONTROL



Technical Specification

MODEL	POWER kW	HP	PRESSURE Bar	CAPACITY m³/min	DIMENSIONS (L×W×H) mm	WEIGHT Kg	OUTLET PIPE DIAMETER	NOISE LEVEL dB
XLPM30A-IID	22	30	7	4.75	1100X950X1410	590	G1 1/4	75
			8	4.51				
			10	4.06				
XLPM40A-IID	30	40	7	6.28	1300X1000X1455	670	G1 1/2	75
			8	5.97				
			10	5.29				
XLPM50A-IID	37	50	7	7.60	1300X1000X1455	670	G1 1/2	75
			8	7.24				
			10	6.52				
XLPM60A-IID	45	60	7	9.26	1650X1300X1850	1360	G2	78
			8	8.80				
			10	7.92				
XLPM75A-IID	55	75	7	11.46	1650X1300X1850	1360	G2	80
			8	10.92				
			10	9.82				

MODEL	POWER kW	HP	PRESSURE Bar	CAPACITY m³/min	DIMENSIONS (L×W×H) mm	WEIGHT Kg	OUTLET PIPE DIAMETER	NOISE LEVEL dB
XLPM100A-IID	75	100	7	16.00	2670X1880X1720	2800	DN65	80
			8	15.24				
			10	13.71				
XLPM120A-IID	90	120	7	19.05	2670X1880X1720	2800	DN65	85
			8	18.13				
			10	16.49				
XLPM150A-IID	110	150	7	23.76	2740X2145X2000	3550	DN65	85
			8	22.57				
			10	20.58				
XLPM175A-IID	132	175	7	27.55	2740X2145X2000	3550	DN65	85
			8	26.25				
			10	23.85				
XLPM200A-IID	160	200	7	33.28	3978X2378X2260	6000	DN100	85
			8	32.23				
			10	28.56				
XLPM250A-IID	185	250	7	40.32	3978X2378X2260	6000	DN100	85
			8	37.38				
			10	33.28				
XLPM270A-IID	200	270	7	43.55	3978X2378X2260	6000	DN100	85
			8	41.85				
			10	37.46				
XLPM300A-IID	220	300	7	49.35	3978X2378X2260	6000	DN100	85
			8	45.99				
			10	41.26				
XLPM350A-IID	250	350	7	54.81	3978X2378X2260	6000	DN100	85
			8	52.06				
			10	46.28				

NOTE : * The exhaust volume is measured under the rated exhaust pressure, according to the national standard GB3853 test (equivalent to ISO1217 appendix C).

* Recommend frequency 30%~100%

* The above data is based on the standard grid- 380V / 50HZ

* Please make further inquiry for the non-standard specification type and machines which are used under high/low temperature, high humidity, dusty working environment.

TWO STAGE COMPRESSION PERMANENT MAGNET VARIABLE SPEED LOW PRESSURE SERIES

- SMOOTH SPEED ADJUSTMENT
- EXCEEDS FIRST CLASS ENERGY EFFICIENCY STANDARDS
- LOW NOISE
- HIGH DISCHARGE CAPACITY
- DUAL INVERTER CONTROL



MODEL	POWER kW HP		PRESSURE Bar	CAPACITY m³/min	DIMENSIONS (L×W×H) mm	WEIGHT Kg	OUTLET PIPE DIAMETER	NOISE LEVEL dB
XLPM120A-IID	90	120	4	25.30	3335X2145X2055	3600	DN100	80
			5	23.34				
XLPM150A-IID	110	150	4	28.82	3335X2145X2055	3600	DN100	80
			5	27.82				
XLPM175A-IID	132	175	4	33.10	3335X2145X2055	3600	DN100	82
			5	31.14				
XLPM200A-IID	160	200	4	44.67	3978X2378X2450	6200	DN125	82
			5	41.70				
XLPM250A-IID	185	250	4	47.39	3978X2378X2450	6200	DN125	85
			5	45.00				
XLPM270A-IID	200	270	4	50.83	3978X2378X2450	6200	DN125	85
			5	46.20				
XLPM300A-IID	220	300	4	56.81	3978X2378X2450	6200	DN125	85
			5	53.55				

TWO STAGE COMPRESSION PERMANENT MAGNET VARIABLE SPEED LOW PRESSURE SERIES

Technical Specification

MODEL	POWER kW HP		PRESSURE Bar	CAPACITY m³/min	DIMENSIONS (L×W×H) mm	WEIGHT Kg	OUTLET PIPE DIAMETER	NOISE LEVEL dB
XLPM50A-IID	37	50	4	9.39	1650X1300X1850	1360	G2	75
			5	8.79				
XLPM60A-IID	45	60	4	11.32	1650X1300X1850	1360	G2	80
			5	10.61				
XLPM75A-IID	55	75	4	14.95	2670X1880X2000	2800	DN65	80
			5	13.91				
XLPM100A-IID	75	100	4	19.01	2670X1880X2000	2800	DN65	80
			5	18.60				

PERMANENT MAGNET VARIABLE SPEED LOW PRESSURE SCREW AIR COMPRESSOR SERIES

Technical Specification

MODEL	POWER kW HP		PRESSURE Bar	CAPACITY m³/min	DIMENSIONS (L×W×H) mm	WEIGHT Kg	OUTLET PIPE DIAMETER	NOISE LEVEL dB
XLPM75AL	55	75	1.5-3	4.8-16	2300X1760X1740	2500	DN80	80
XLPM100AL	75	100	1.5-3	6.6-22	2860X1800X2080	2800	DN100	80
XLPM120AL	90	120	1.5-3	8.4-28	2860X1800X2080	2800	DN100	85
XLPM150AL	110	150	1.5-3	9.0-30	3300X2200X2100	4500	DN150	85
XLPM175AL	132	175	1.5-3	12.0-40	3300X2200X2100	4700	DN150	85
XLPM200AL	160	200	1.5-3	13.5-45	3500X2300X2480	5000	DN150	85

NOTE : * The exhaust volume is measured under the rated exhaust pressure, according to the national standard GB3853 test (equivalent to ISO1217 appendix C).

* Recommend frequency 30%~100%

* The above data is based on the standard grid- 380V / 50HZ

* Please make further inquiry for the non-standard specification type and machines which are used under high/low temperature, high humidity, dusty working environment.

INNOVATIVE TWO STAGE COMPRESSION PERMANENT MAGNET VARIABLE SPEED TECHNOLOGY

THE INDUSTRY PIONEER

Xinlei is the pioneer in developing the two stage compression permanent magnet variable speed air compressor. This new innovation is able to save up to more than 50% energy. A complete range of air compressor from 7.5 – 315 kW is available to meet the market demand benefiting the industry in energy savings

HIGH EFFICIECNCY AIR END ASSEMBLY



SYNCHRONOUS MOTOR, SMOOTH SPEED ADJUSTMENT

Xinlei is the only one in the world who incorporates electronic speed control in two stage compression, achieving smooth speed adjustment for both first and second stage compression simultaneously.



TWIN PERMANENT MAGNET SYNCHRONOUS MOTOR DIRECTLY CONNECTED TO TWIN AIR END WITH A SINGLE SHAFT RESPECTIVELY

Xinlei is the world pioneer in incorporating permanent magnet synchronous motor in two stage compression screw air compressor, both first and second stage air end utilizing single shaft connection design, achieving zero loss in transmission.



HIGH PRECISION DESIGN

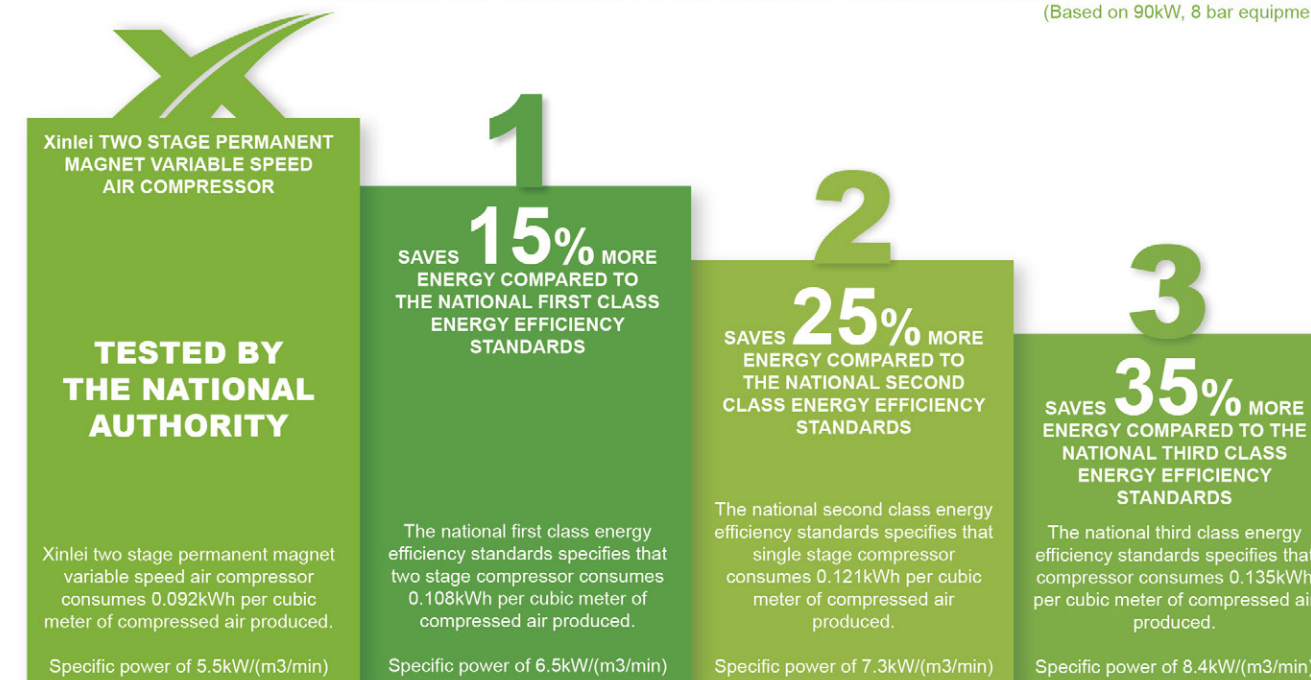
Every screw air end element is precisely design and tested to ensure the highest quality and efficiency. Asymmetric rotor type profile increases the efficiency by 3 – 5%. Lower compression ratio for each of the air end assembly extends the life of the bearings and air end.

ENVIRONMENTALLY FRIENDLY

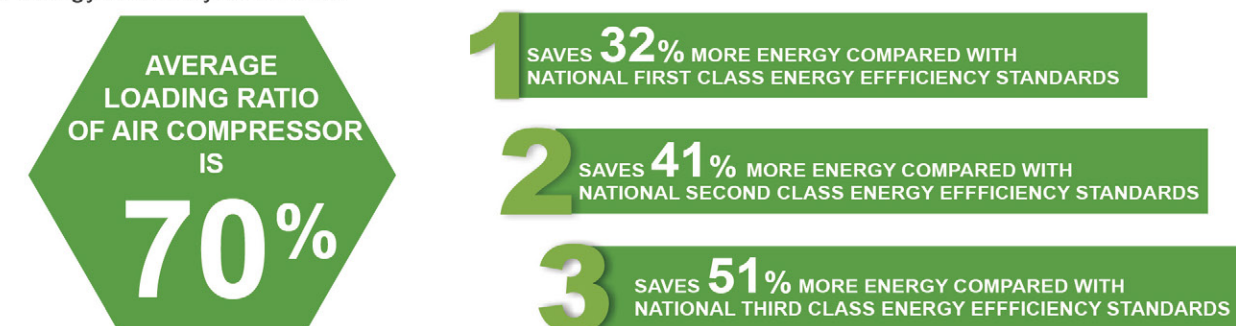
High energy saving air compressor technology developed by Xinlei independently, exceeds the national first class energy efficiency standards, leading the world in the field of saving the environment.

ENERGY SAVINGS ON FULL LOAD

COMPARISON OF THE ENERGY CONSUMPTION BASED ON THE NATIONAL ENERGY EFFICIENCY STANDARDS.
(Based on 90kW, 8 bar equipment)



According to the test results issued by the national authority, Xinlei air compressor is able to save more than 15% of energy compared to the national first class energy efficiency standards, more than 25% of energy compared to the national second class energy efficiency standards, more than 35% of energy compared to the national third class energy efficiency standards.



Xinlei air compressor can automatically realize frequency conversion work. energy can be saved by approximately 32% compared with ordinary level 1 efficiency under the condition that average compressed air load ratio is 70%. energy can be saved by approximately 41% compared with ordinary level 2 efficiency, and energy can be saved by approximately 51% compared with ordinary level 3 efficiency.

SILENT

The rotation speed of the first stage and second stage compression is lower than 2200rpm which translate to lower noise level.